

ONE OPPORTUNITY. LIMITLESS POSSIBILITIES.

If you want to play sports at an NCAA Division I or II school, start by registering for a Certification Account with the NCAA Eligibility Center at eligibilitycenter.org. If you want to play Division III sports or you aren't sure where you want to compete, start by creating a Profile Page at eligibilitycenter.org.

ACADEMIC REQUIREMENTS

To play sports at a Division I or II school, you must graduate from high school, complete 16 NCAA-approved core courses, earn a minimum GPA, and earn an ACT or SAT score that matches your core-course GPA.

CORE COURSES

Visit eligibilitycenter.org/courselist for a full list of your high school's approved core courses. Complete 16 core courses in the following areas:

DIVISION I

Complete 10 NCAA core courses, including seven in English, math or natural/physical science, before your seventh semester.

| | | | | | |
|----------------|---|---|---------------------------|--|--|
| ENGLISH | NATURAL/ PHYSICAL SCIENCE (including one year of lab science, if offered) | MATH (Algebra I or higher) | SOCIAL SCIENCE | ADDITIONAL (English, math or natural/physical science) | ADDITIONAL (English, math, natural/physical science, social science, foreign language, comparative religion or philosophy) |
| 4 years | 2 years | 3 years | 2 years | 1 year | 4 years |

DIVISION II

| | | | | | |
|----------------|---|---|---------------------------|--|--|
| ENGLISH | NATURAL/ PHYSICAL SCIENCE (including one year of lab science, if offered) | MATH (Algebra I or higher) | SOCIAL SCIENCE | ADDITIONAL (English, math or natural/physical science) | ADDITIONAL (English, math, natural/physical science, social science, foreign language, comparative religion or philosophy) |
| 3 years | 2 years | 2 years | 2 years | 3 years | 4 years |

GRADE-POINT AVERAGE

The NCAA Eligibility Center calculates your grade-point average (GPA) based on the grades you earn in NCAA-approved core courses.

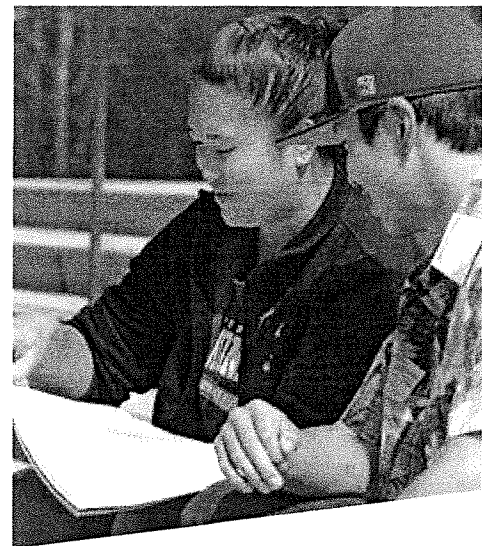
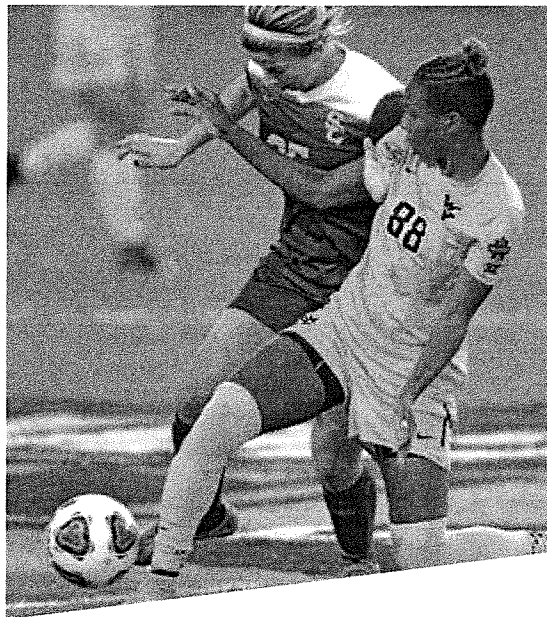
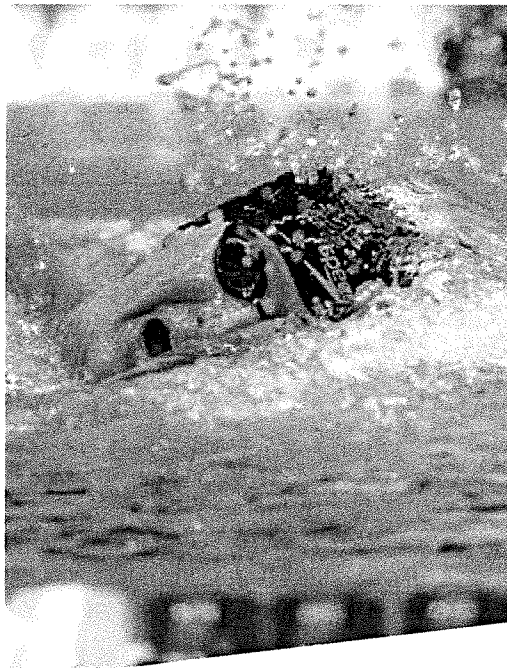
- DI requires a minimum 2.3 GPA
- DII requires a minimum 2.2 GPA

SLIDING SCALE

Divisions I and II use sliding scales to match test scores and GPAs to determine eligibility. The sliding scale balances your test score with your GPA. If you have a low test score, you need a higher GPA to be eligible. Find more information about sliding scales at ncaa.org/playcollegesports.

TEST SCORES

Take the ACT or SAT as many times as you want before you enroll full time in college, but remember to list the NCAA Eligibility Center (code 9999) as a score recipient whenever you register to take a test. If you take a test more than once, send us all your scores and we will choose the best scores from each test section to create your sum score. We accept official scores only from the ACT or SAT, and won't use scores shown on your high school transcript. Remember to apply the College Board concordance table for SAT tests taken in March 2016 and after.



HIGH SCHOOL TIMELINE

GRADE 9

Plan

- Start planning now! Take the right courses and earn the best grades you can.
- Ask your counselor for a list of your high school's NCAA core courses to make sure you take the right classes. Or, find your high school's list of NCAA core courses at eligibilitycenter.org/courselist.

GRADE 10

Register

- Register for a Certification Account or Profile Page with the NCAA Eligibility Center at eligibilitycenter.org.
- If you fall behind on courses, don't take shortcuts to catch up. Ask your counselor for help with finding approved courses or programs you can take.

GRADE 11

Study

- Check with your counselor to make sure you are on track to graduate on time.
- Take the ACT or SAT, and make sure we get your scores by using code **9999**.
- At the end of the year, ask your counselor to upload your official transcript.

GRADE 12

Graduate

- Take the ACT or SAT again, if necessary, and make sure we get your scores by using code **9999**.
- Request your final amateurism certification after April 1.
- After you graduate, ask your counselor to upload your final official transcript with proof of graduation.

Core Courses

This simple formula will help you meet Division I and II core-course requirements.

4x4=16

- + 4 English courses (one per year)
- + 4 math courses (one per year)
- + 4 science courses (one per year)
- + 4 social science courses (one per year)
- = 16 NCAA CORE COURSES**

For more information:

ncaa.org/playcollegesports
eligibilitycenter.org

Search Frequently Asked Questions

ncaa.org/studentfaq

Follow us on Twitter:

@NCAAEC